

WELLAND HERITAGE COUNCIL AND MULTICULTURAL CENTRE

The WHC&MC was founded in 1976, operating as a non-profit charitable organization. The mission of the WHC&MC is to provide newcomers and Canadian citizens with services and programs that strengthen individuals, families, and the community, while creating a cultural awareness and understanding amongst all citizens in Welland and surrounding areas.

The WHC&MC has helped thousands of immigrants overcome barriers to integration and watched with pride as they built new lives for themselves here in Canada. The greatest contribution is in helping immigrants gain the necessary skills to live and work in Canada, so they can become successful participating members of our society.

NIAGARA NOW HAS AN AGE-FRIENDLY COUNCIL

The Age-Friendly Niagara Network, which has existed with a Leadership Council for over 10 years, has transitioned to a council on aging, named the Age-Friendly Niagara Council (AFNC) effective September 2021. The new Council has an interim Board of Directors and plans to proceed to a founding Board by 2022. The Council's vision is "an Age-Friendly Niagara – a community for all ages".

Concurrently, the AFNC fostered the formation of a Collaborative of municipal age-friendly/seniors advisory committees from the 12 local area municipalities, with a vision of "one voice" for select older adult issues across Niagara.

The AFNC produced a virtual exhibit at the International Federation on Ageing (IFA) global conference in Niagara Falls and a brochure with a theme of empowered older adults in Niagara highlighting the above developments. Stay tuned and look for the brochure.

FOYER RICHELIEU TO BUILD 128-BED LONG TERM CARE HOME

Foyer Richelieu Welland will build a new 128-bed long-term care home, a new 10-bed hospice (built and managed independently by Hospice Niagara), 50 assisted living wellness suites and a cultural and community center that will bring many people together for social, religious and cultural gatherings.

Including the independent seniors' residence located on our campus, although managed independently from Foyer Richelieu, we will be one of the only organizations in the country to have all four points of service on the same campus of care, and all in both official languages. We plan to begin construction of the new centre in the spring of 2022.



Foyer Richelieu Welland va construire un foyer de soins de longue durée de 128 lits, un hospice de 10 lits (construit et géré indépendamment par Hospice Niagara), 50 suites pour personnes âgées avec services de soutien et un centre culturel et communautaire qui va rassembler tous ces gens pour plusieurs activités sociales, religieuses et culturelles.

Avec les 65 loyers à la résidence indépendante pour aînés située sur notre terrain, et gérée indépendamment du Foyer Richelieu, nous allons être un des seuls dans le pays à avoir les quatre points de service sur le même campus de soins, et tout ceci, dans les deux langues officielles. Nous planifions commencer la construction de ce nouveau centre au printemps, 2022.

AGE-FRIENDLY FORUM

Senior Citizens ADVISORY COMMITTEE

Chair, Carol Sernasie • **Vice Chair,** Doug Rapelje
Members; Denise Bourque, Jeanine Hughes, Joan Churchman, Linda Oakes, Rick Lostracco, Ann Simunic, Aldo Parrotta
Appointed by the Welland City Council

To serve in an advisory capacity to City Council and Staff on matters that impact the quality of life of senior citizens in the City of Welland

Some of the matters on the **Senior Citizens Advisory Committee's** agenda since its formation in 2010

Creation of an Age-Friendly Business Guide for local businesses to follow to improve day-to-day activities of citizens of Welland when visiting their establishments

Worked with Welland/Pelham Chamber of Commerce to create an Age-Friendly Community Business Ruby Award, which is presented to "businesses that focus on assuring that older customers are safe, comfortable and respected". Award was presented in 2019 to Welland Community Wellness Complex

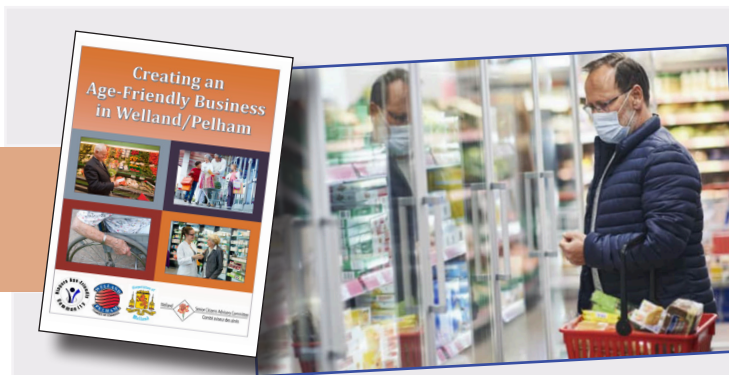
Creation of a Community Resources 'Library' posted on Welland's web site which lists information for seniors on available services and programs, such as aid for newcomers, food deliveries, respite care, social activities and general health

Hosting of annual Seniors' Day celebration at the Welland Community Wellness Complex

With the Mayor of the City of Welland, annually raise an Age-Friendly Flag at City Hall to celebrate National Seniors Day

Successfully promoted Welland to be one of the first communities to receive the Provincial Age-Friendly Community Award (a community 'characterized by accessible and inclusive environments that enable seniors to live independent healthy and active, safe, and socially connected lives.')

Continual advocacy for additional Long-Term Care beds in our area (recent additions to Foyer-Richelieu); Residence Hospice in Welland; additional park benches



HOSPICE NIAGARA MAKING CARE AVAILABLE FOR MORE PEOPLE ACROSS OUR REGION

Everyone deserves high quality compassionate care, especially throughout an illness and at end of life. Hospice Niagara has embarked on an ambitious \$18-million capital campaign to add 20 new hospice beds and two new Hospice Centres of Excellence in Niagara by the end of 2024, in addition to the existing 10 beds in St. Catharines. The new hospices will be located alongside long-term care facilities, Foyer Richelieu in Welland and Gilmore Lodge in Fort Erie. Our region currently lacks adequate hospice services to ensure people receive the care they need, expect and deserve. Together with the community's support, we can ensure that hospice care is available when needed, for generations to come. **For more information, please contact campaign@hospiceniagara.ca or 905-984-8766 ext. 224.**



Foyer Richelieu in Welland

DEMENTIA DOESN'T DISCRIMINATE AND CAN AFFECT ANYONE

It's one of the fastest-growing diseases of our time, and still has no cure or effective treatments

Currently, there are over 10,787 people in the Region who are experiencing a progressive dementia.

The Alzheimer Society of Niagara Region's mission is to advocate with and for people living with dementia and their care partners and provide access to a diverse range of appropriate resources and supports. By providing education, personalized in-home support services and wellness programs, families can better understand dementia, navigate the health system and access the resources they need when they need them.

It is so important to connect early in the disease process with the Alzheimer Society's First Link Program. Call 905-687-3914 or visit www.alzheimerniagara.ca



THE SENIOR CITIZENS ADVISORY COMMITTEE, IN ACTION

The Senior Citizen's Advisory Committee (SCAC) is actively promoting the City of Welland as "An Age-Friendly" city and a "Community for All Ages". SCAC has approved the printing, promotion and distribution of Age-Friendly decals to be displayed in Welland businesses, agencies, churches, community halls and public buildings. By identifying these locations and encouraging them to display the Age Friendly decal in a prominent place, people will know that these agencies are indeed accessible and accommodating thereby promoting our city as a Community for All Ages.

If you are interested in displaying the decal or require further info please contact the City of Welland via email SCAC@welland.ca

PLANNING CITIES FOR PEOPLE LIVING WITH DEMENTIA

Ryerson University School of Urban and Regional Planning professor Samantha Biglieri developed low-cost city planning processes to make city planning more inclusive for people living with dementia. In an effort to prevent stigma associated with people living with the illness, Professor Biglieri is exploring ways to build neighbourhoods that are accessible to them. According to her, planners can promote justice by helping a diverse range of people access the planning process by planning shorter presentations, using larger fonts on written materials and considering noise and light levels in the room. An article on this research is in the Journal of the American Planning Association.

Ryerson University, Office of the Vice-President, Research and Innovation - September 21, 2020

WELLAND TRANSIT OFFERING NEW REDUCED FARE INITIATIVE FOR LOW-INCOME RIDERS STARTING JAN. 1, 2022

Welland, ON – As the economic impacts of the COVID-19 pandemic continue to reveal, the City has identified one area it can make an immediate impact for low-income customers: Transit. Welland Transit has identified a need within its fare structure to assist a demographic of riders to make transit more accessible. As a result, it has initiated a reduced fare structure for qualified low-income passengers beginning January 1, 2022.

"We try to provide great service for all riders of Welland Transit," said Ed Zahra, transit manager. "We also try to provide compassionate service, and in this case, it's recognizing the population of riders who would benefit from service at a reduced rate."

Qualified customers are those actively registered with the Ontario Disability Support Program (ODSP).

Privacy and confidentiality of the qualified individuals remain protected by the ongoing partnership with the Hope Centre, which will sell and disseminate the passes accordingly. The issued passes will be coded from the provider with the applied discount; however, the pass will not differ in appearance from a regularly priced pass. The current price for an adult 31-day municipal pass is \$85. The price for the reduced pass would be \$50.

Welland Transit implemented the swipe card pass, January 2019. As such, we wish to communicate to our passengers that previously issued punch-style passes will no longer be accepted beyond December 31, 2021. Transit remains an essential service, and the City of Welland commits to making it accessible for everyone.

Original story ran in the Welland Tribune, November 4, 2021